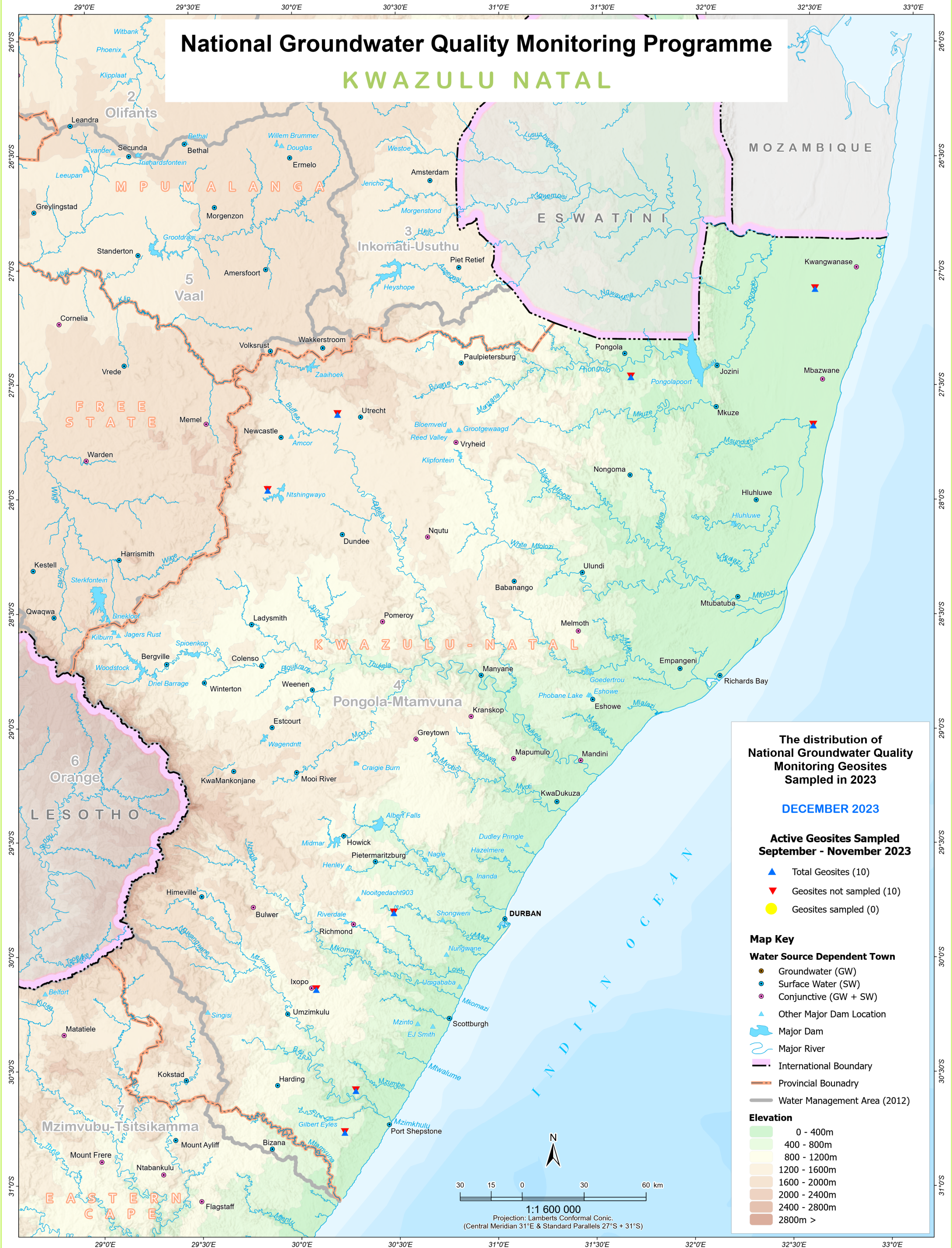


National Groundwater Quality Monitoring Programme

KWAZULU NATAL



The distribution of National Groundwater Quality Monitoring Geosites Sampled in 2023

DECEMBER 2023

Active Geosites Sampled September - November 2023

- ▲ Total Geosites (10)
- ▼ Geosites not sampled (10)
- Geosites sampled (0)

Map Key

Water Source Dependent Town

- Groundwater (GW)
- Surface Water (SW)
- Conjunctive (GW + SW)
- ▲ Other Major Dam Location
- Major Dam
- Major River
- International Boundary
- Provincial Boundary
- Water Management Area (2012)

Elevation

- 0 - 400m
- 400 - 800m
- 800 - 1200m
- 1200 - 1600m
- 1600 - 2000m
- 2000 - 2400m
- 2400 - 2800m
- 2800m >

Data sources:
 Towns, Rivers, Dams, Elevation and International Boundaries - Department of Agriculture, Land Reform and Rural Development (DALRRD), Chief Directorate: National Geospatial Information (NGI);
 National Groundwater Archive (NGA) & Water Management Areas - Department of Water & Sanitation, Directorate: National Hydrological Services;
 Water Management System (WMS) - Department of Water & Sanitation, Directorate: Recourse Quality Information Services (RQIS).

Map produced by:
 Department of Water & Sanitation: Directorate: Spatial Information (SI); Sub-Directorate: Geographic Information and Archiving (GI&A) - Cartographic Services Unit. Map Date: Oct 2023 (Ref: GM22_610)